

ASAD'S



PRODUCTION



SHOWCASE

ASAD JAWAID

I am Asad, a Line Producer with experience leading major productions in Pakistan. I have worked with Hum TV as a line producer on some of the country's most challenging and logistically demanding projects.

I was also part of Pakistan's first-ever Netflix series, handling production operations and ensuring smooth execution from planning to delivery. My focus is on managing complex shoots, keeping everything on time, on budget, and on point.



EDUCATION

BACHELORS OF BUSINESS ADMINISTRATION

Production and Supply Chain Management

IOBM Karachi (2020-24)

INTERMEDIATE

Pre-Engineering

THE EDUCATORS (2017-19)



WORK EXPERIENCE

LINE PRODUCER

Momina Duraid Production (HUM TV)

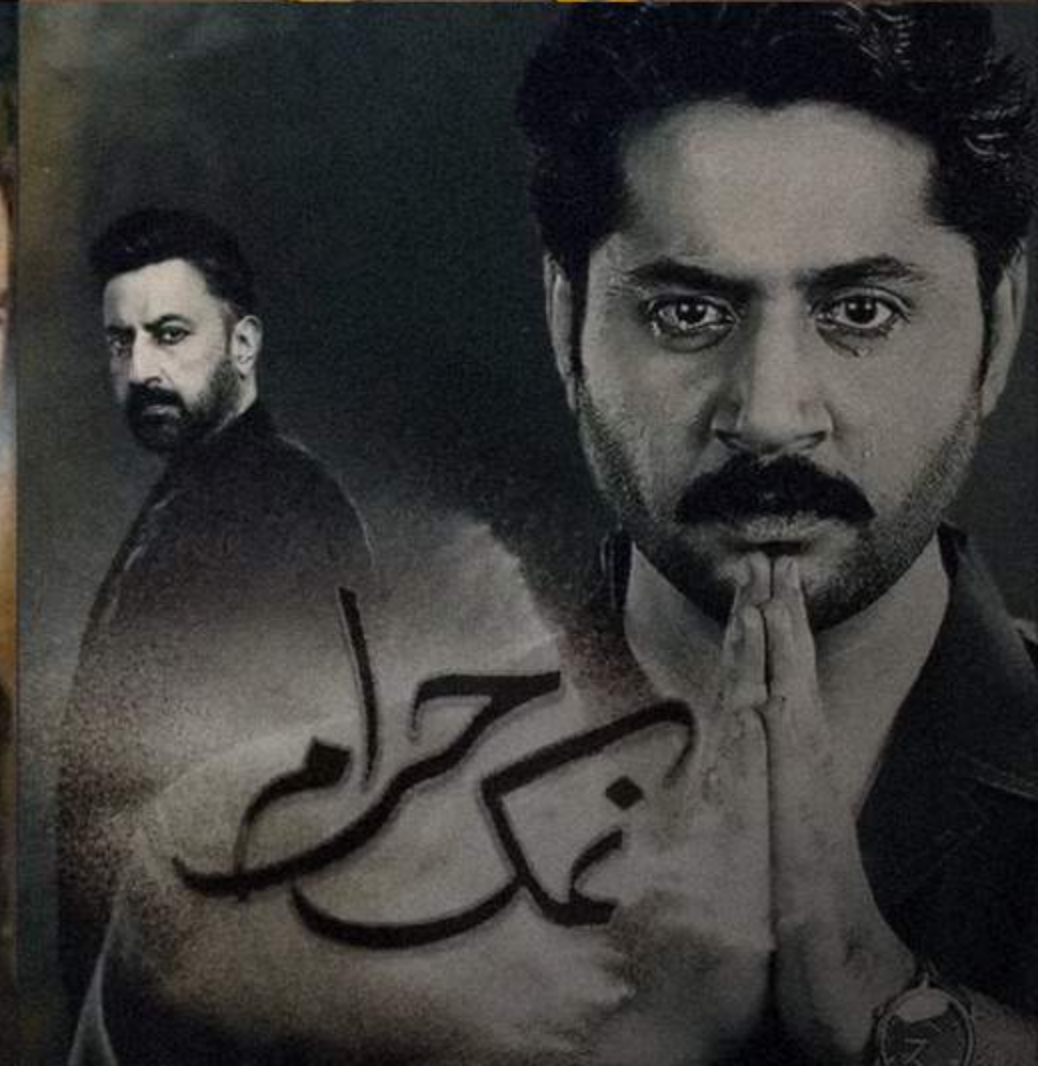
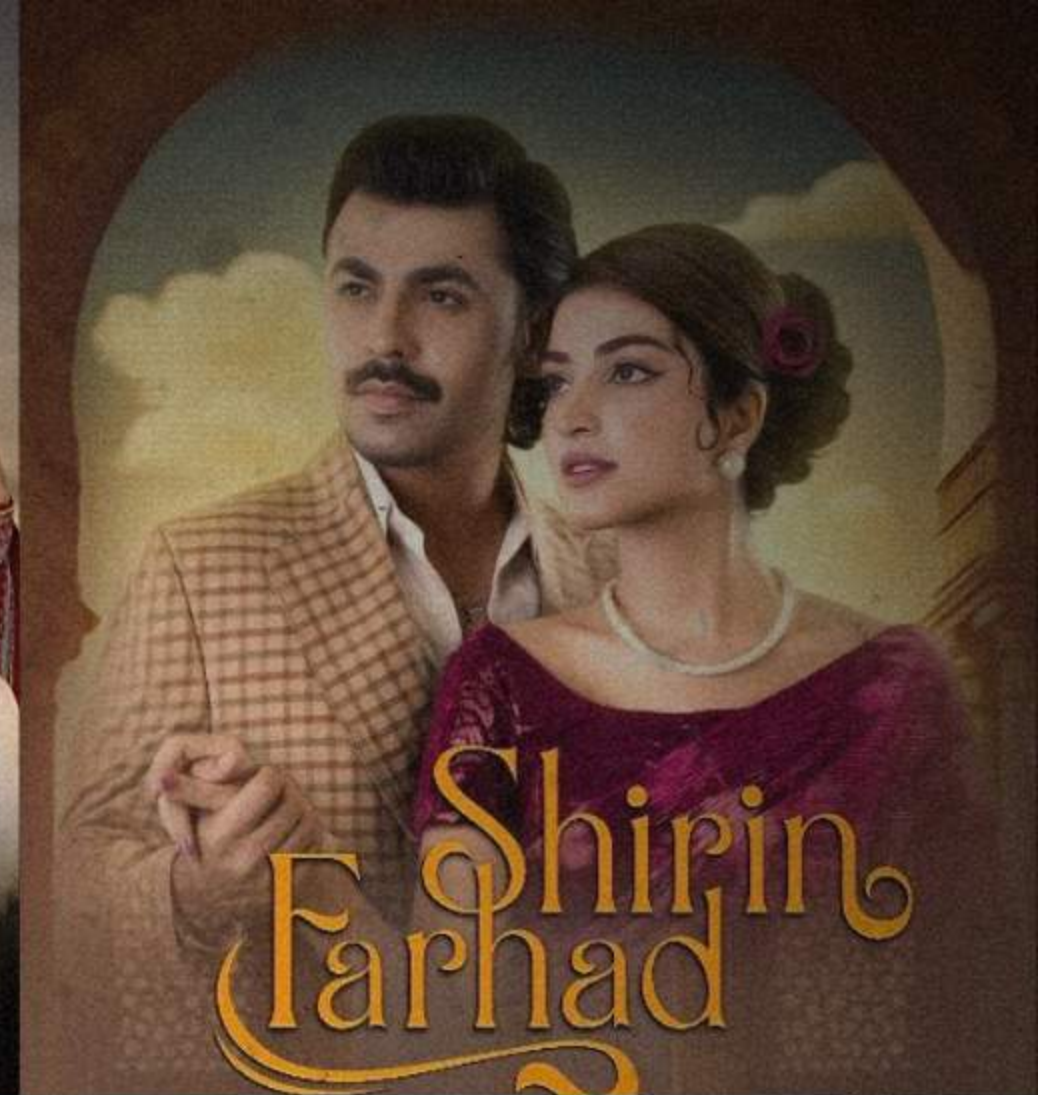
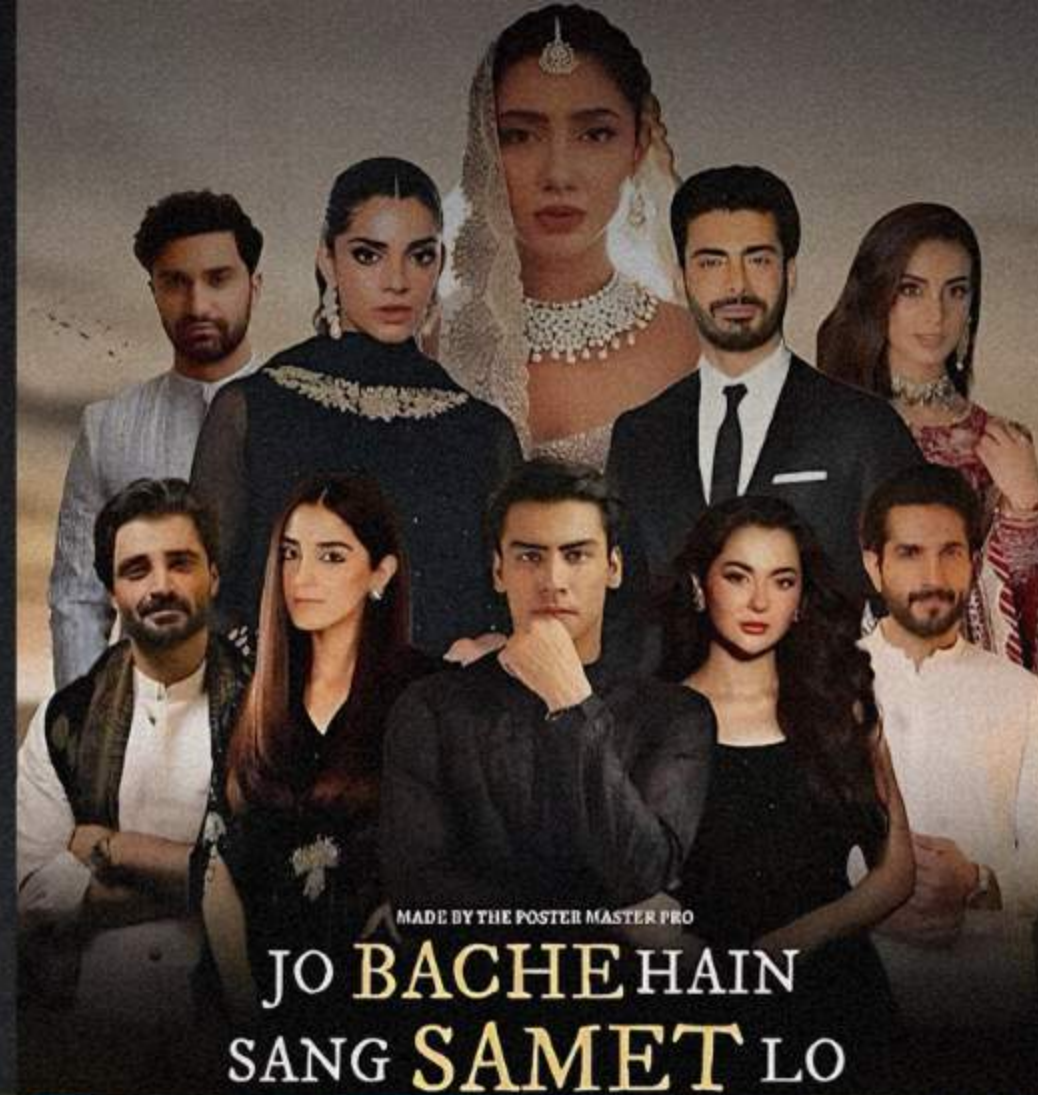
2022- Current

Acheived Service Time And Quality Targets

Handle Customer Concerns and Major Issues to
Supervisor



PROJECTS ➞



NETFLIX



MADE BY THE POSTER MASTER PRO

**JO BACHE HAIN
SANG SAMET LO**

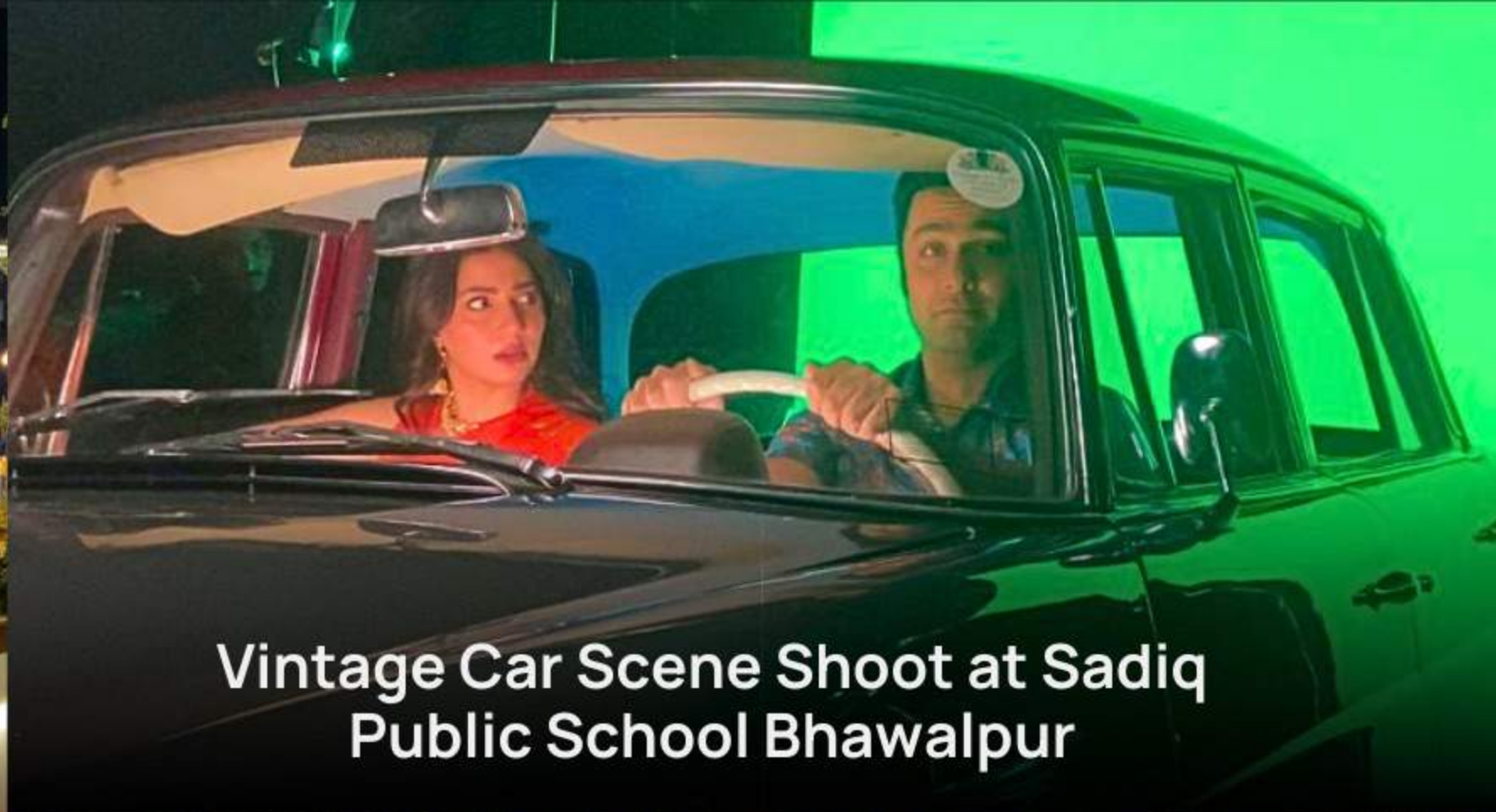
Pakistan's First

NETFLIX
SERIES

NETFLIX

DIRECTOR

**MOMINA DURAIID
SHAHZAD SHAKIH**



Vintage Car Scene Shoot at Sadiq
Public School Bhawalpur



Hania and Kushal Scene
Italy Cheat

Italy Bar Cheat Bar in Pakistan
All Foreigner & A+ Supporting Cast



Haveli Shoot in Bhawalpur

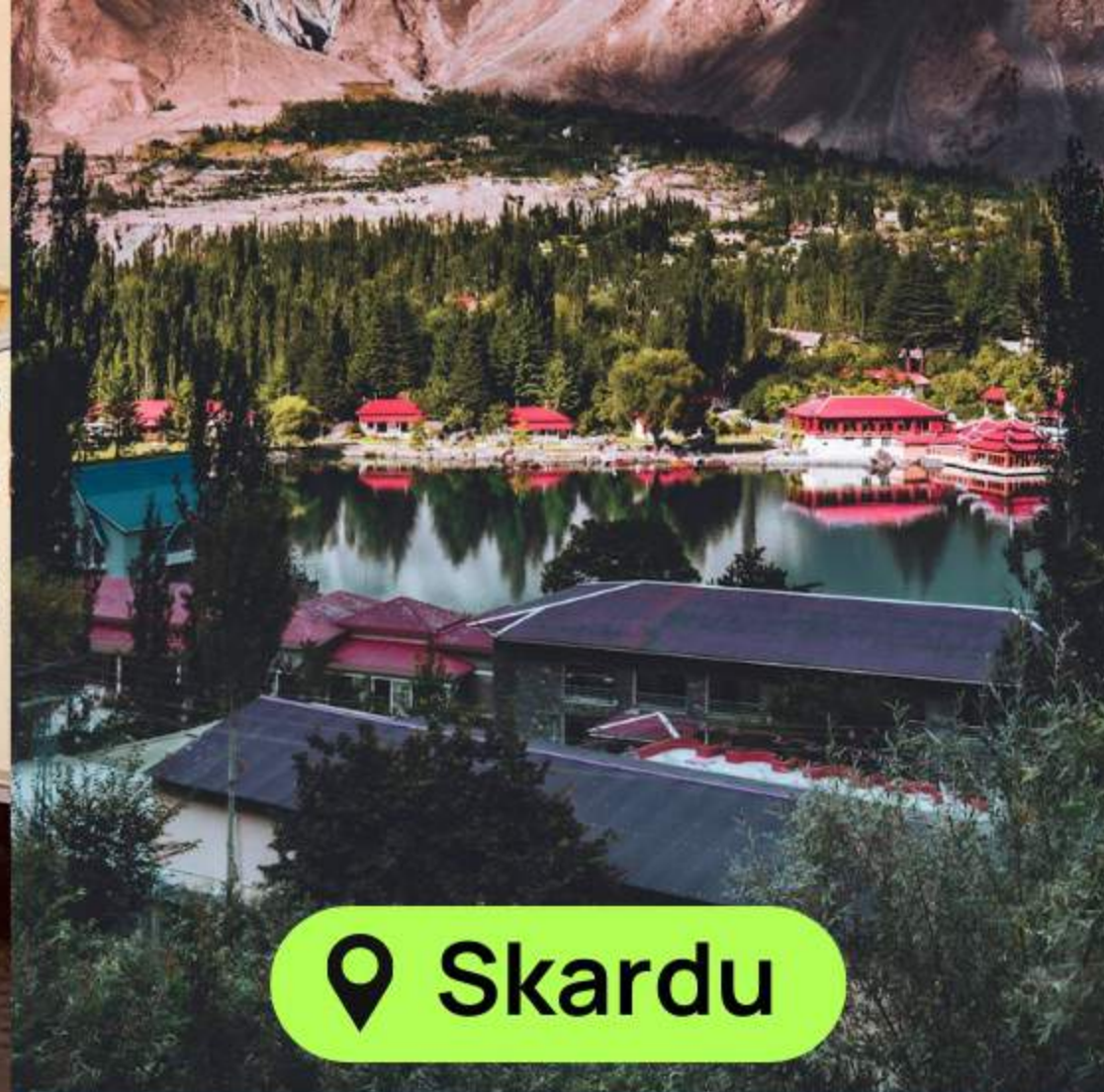


200+ Supporting for Seminar Scene





📍 Italy



📍 Skardu



📍 Khaplu



📍 Italy



📍 Skardu



📍 Murree

JO BACHE HAIN SANG SAMET LO

STARRING

Mahira Khan - Fawad Khan
Hania Amir - Kushal Khan
Hamza Ali Abbasi - Maya Ali
Iqra Aziz - Ahad Raza Mir
Sanam Saeed - Bilal Ashraf
Momina Munir - Ahmed Ali Akbar

EXPECTED
RELEASE ON
25 DEC 2025

LOCATIONS

Italy | Skardu | Khaplu | Murree | Kalabagh | Islamabad | Bhawalpur | Karachi

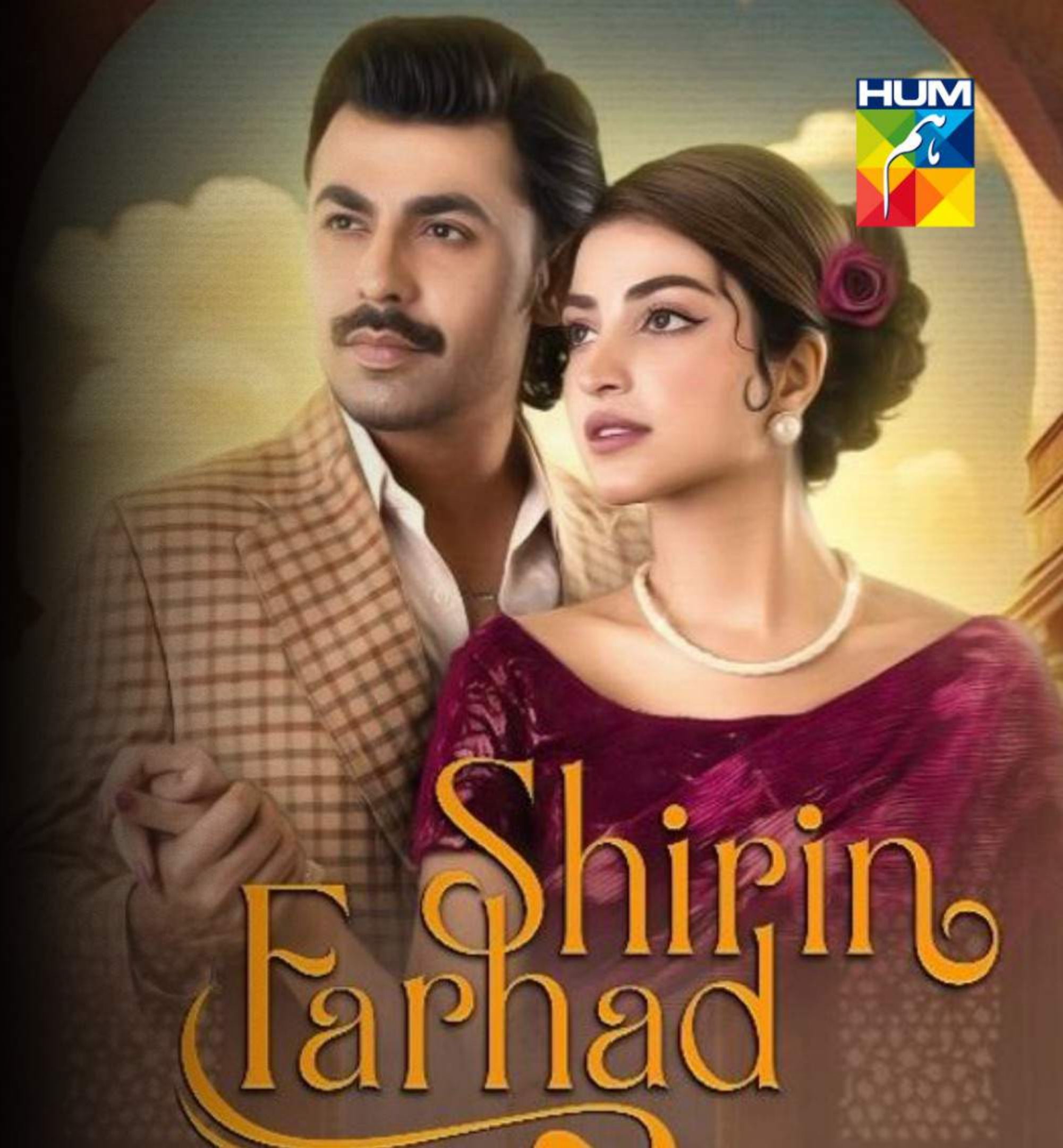
HUM TV's

SHIRIN FARHAD

DRAMA SERIAL

DIRECTOR

ASAD MUMTAZ MALIK



ABOUT

Period drama set in 1972, recreated with complete vintage styling cars, wardrobe, sets, and props. Managed daily operations with over 100+ supporting cast members on set.



STARRING

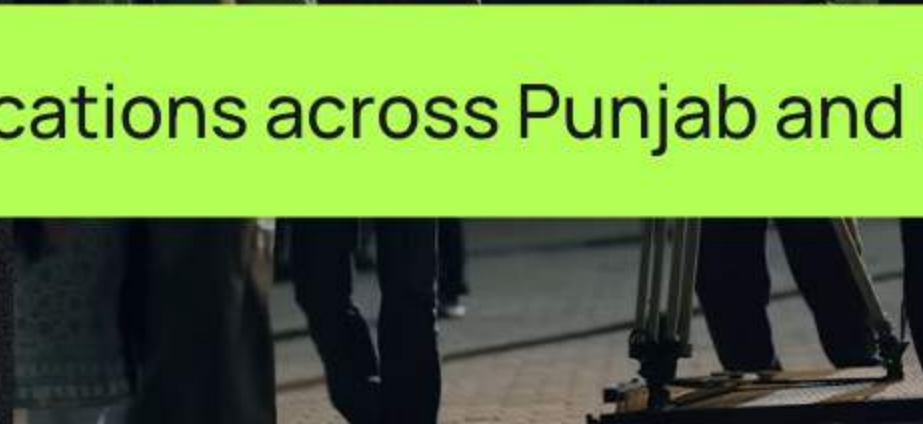
Farhan Saeed - Kinza Hashmi
Saleem Mairaj - Zhalay Sarhadi
Neha Khan - Kanwal Khan
Mubashir Saleem - Haider Shah
Rashid Farouqe - Rabia Rizwan
Rana Majid Khan - Ali Tahir
Ali Sikandar



- Coordinated large-scale shoots across Lahore, Karachi, Soraj, and Misan.
- Managed crew travel, accommodation, and meals.
- Secured shooting permissions, including Karachi Cantt and City Railway Station.
- Handled budgeting, vendor negotiations, and logistics.
- Oversaw wardrobe, props, and vintage set design.
- Arranged vintage vehicles, bikes, cars, and period-specific equipment.
- Managed artist schedules, transport, and accommodations.
- Coordinated camera equipment and international crew requirements.

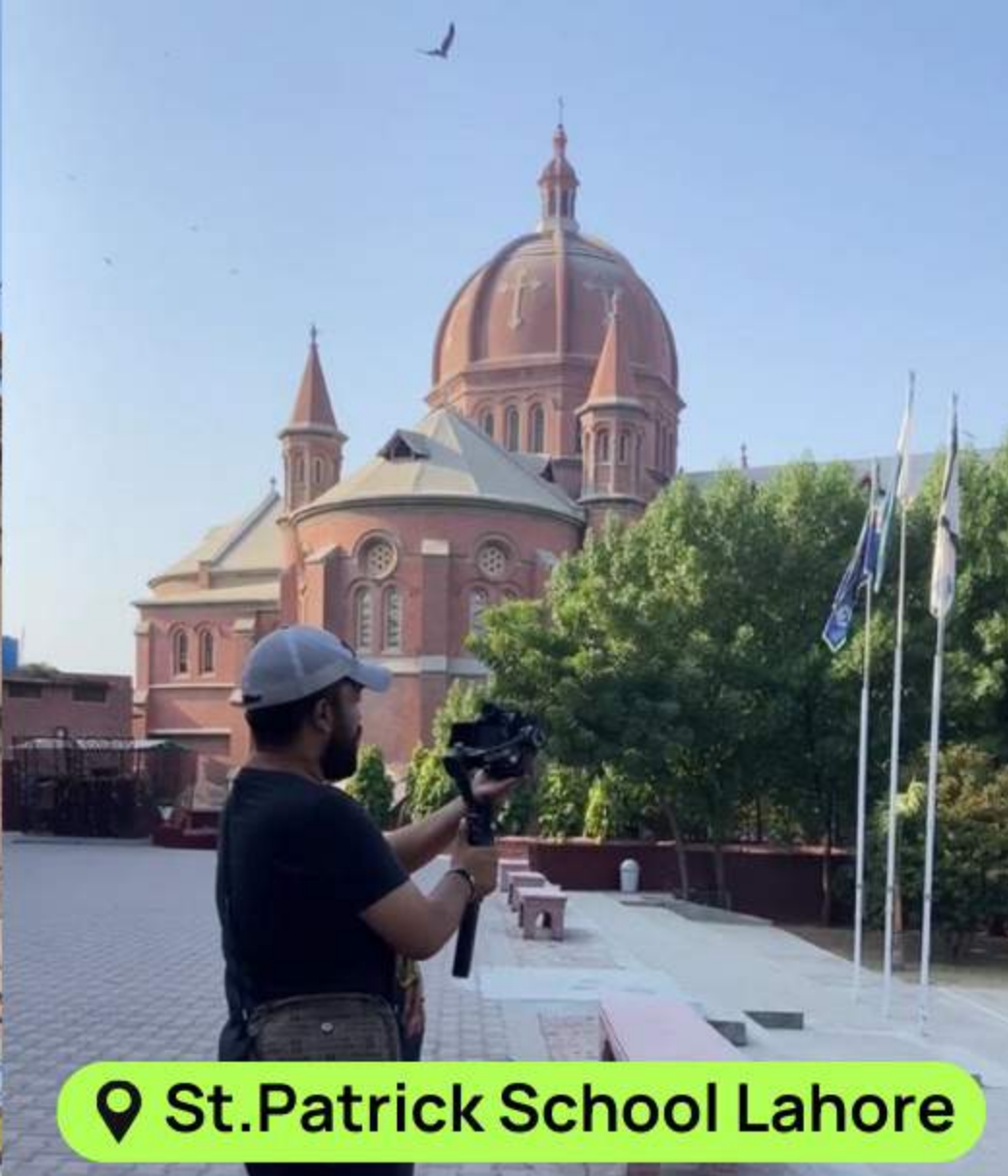
LOCATIONS

Evernew Studio, Lahore | Outdoor locations across Punjab and Karachi | Memon Goth, Karachi





📍 Delhi Gate



📍 St. Patrick School Lahore



📍 Gawal Mandi Lahore



📍 Shamsi Studio Karachi



📍 Memon Goth Karachi



📍 Suraj Village



HUM TV's

ZULM

DRAMA SERIAL

DIRECTOR

IILYAS KASHMIRI

DIGITALLY
PRESENTED BY

Happilac
PAINTS

DIGITALLY
POWERED BY

Sandal
COSMETICS

High-scale drama featuring a star cast including Faysal Qureshi, Sehar Hashmi, Shahzad Shaikh, and Bayza Khan.

Managed large election scenes with 300+ supporting cast members, props, and logistics.





- Coordinated major cast and crew operations for large-scale scenes.
- Managed all props and production design including:
- Posters, banners, flags
- Vehicles (Vigo, Jeep)
- Audio gear (speakers, mics)
- Special items: 10kg flower leaves, marriage bombs, jackets
- Set props: jharoo, balcha, trolley
- Oversaw scheduling, supporting cast arrangements, and on-set logistics.
- Ensured smooth execution of complex crowd and election scenes.



HUM TV's

WOH AIK RAT

TELEFILM

DIRECTOR

SHAHZAD KASHMIRI



STARRING

Mahira Khan - Wahaj Ali
Safiee Hassan - Faiza Saleem
Behroz Sabzwari - Saba Faisal
and others.

- Managed complete production planning and execution.
- Secured railway permissions and coordinated large-scale shoots.
- Oversaw logistics, crew travel, and on-location arrangements.
- Coordinated cast requirements, scheduling, and on-set support.
- Ensured smooth operations for one of Pakistan's most anticipated projects of 2025.

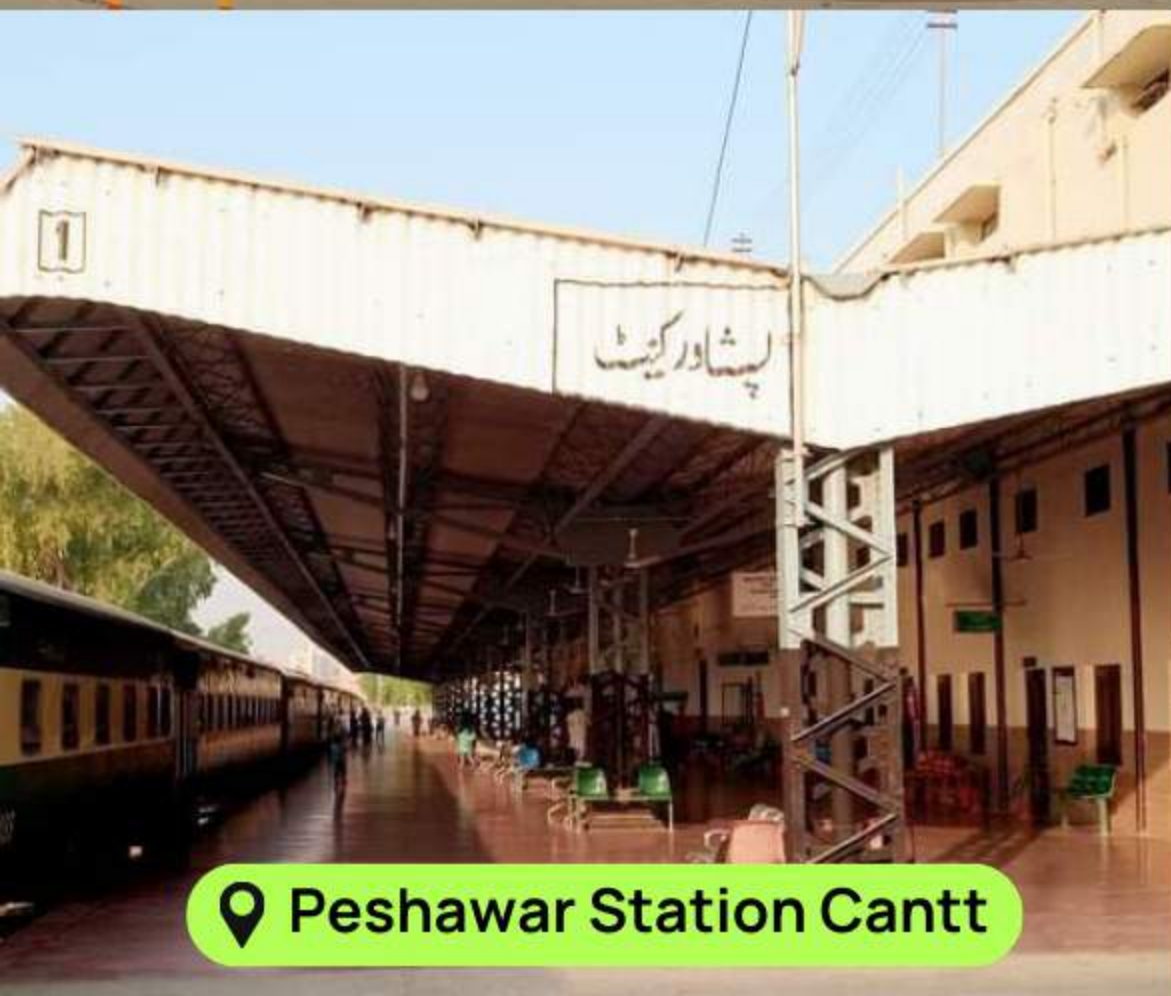
LOCATIONS

Karachi Cantt | Karachi City | Sukkur | Peshawar | Kalabagh





📍 Karachi Cantt Station



📍 Peshawar Station Cantt



📍 City Station Karachi



📍 City Station Karachi

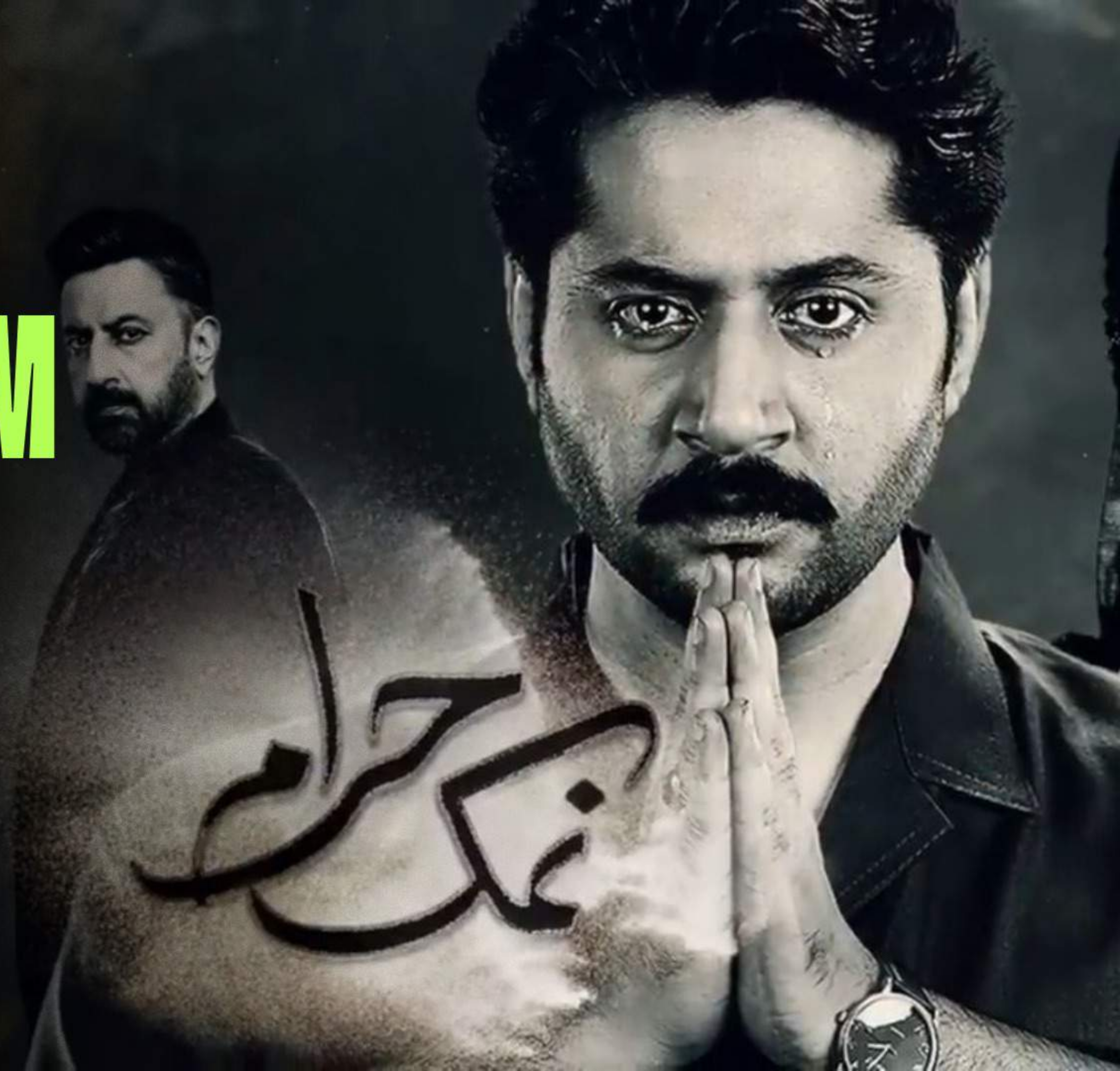


NAMAK HARAM

DRAMA SERIAL

DIRECTOR

SHAQIELLE KHAN



STARRING

Imran Ashraf - Sarah Khan
Anika Zulfiqar - Arsal Khan
Babar Ali - Salma Qureshi
Sunita Marshal - Mehmood



- Coordinated production operations and ensured smooth execution across all departments.
- Managed cast logistics including scheduling, travel, and on-set arrangements.
- Oversaw crew support, resource allocation, and production flow.
- Supervised prop management, equipment handling, and location readiness.
- Maintained communication between director, cast, and crew for seamless execution.





MIX PLATE

TELEFILM

Coming Soon!

STARRING

NIDA YASIR- YASIR NAWAZ

ROMAISA KHAN- KHAKHAN SHAHNAWAZ



ASL CLOTHING

FASHION SHOOT

Independent fashion shoot for ASL Clothing, managed end-to-end production including talent, crew, and equipment.

Photographer: Ahsan Qureshi.

- Managed model casting and hiring process.
- Coordinated with photographer and creative team.
- Arranged studio setup, lighting, and camera equipment.
- Organized full crew operations for smooth workflow.
- Oversaw logistics, scheduling, and on-site support.



DIANA LONDON

FASHION SHOOT

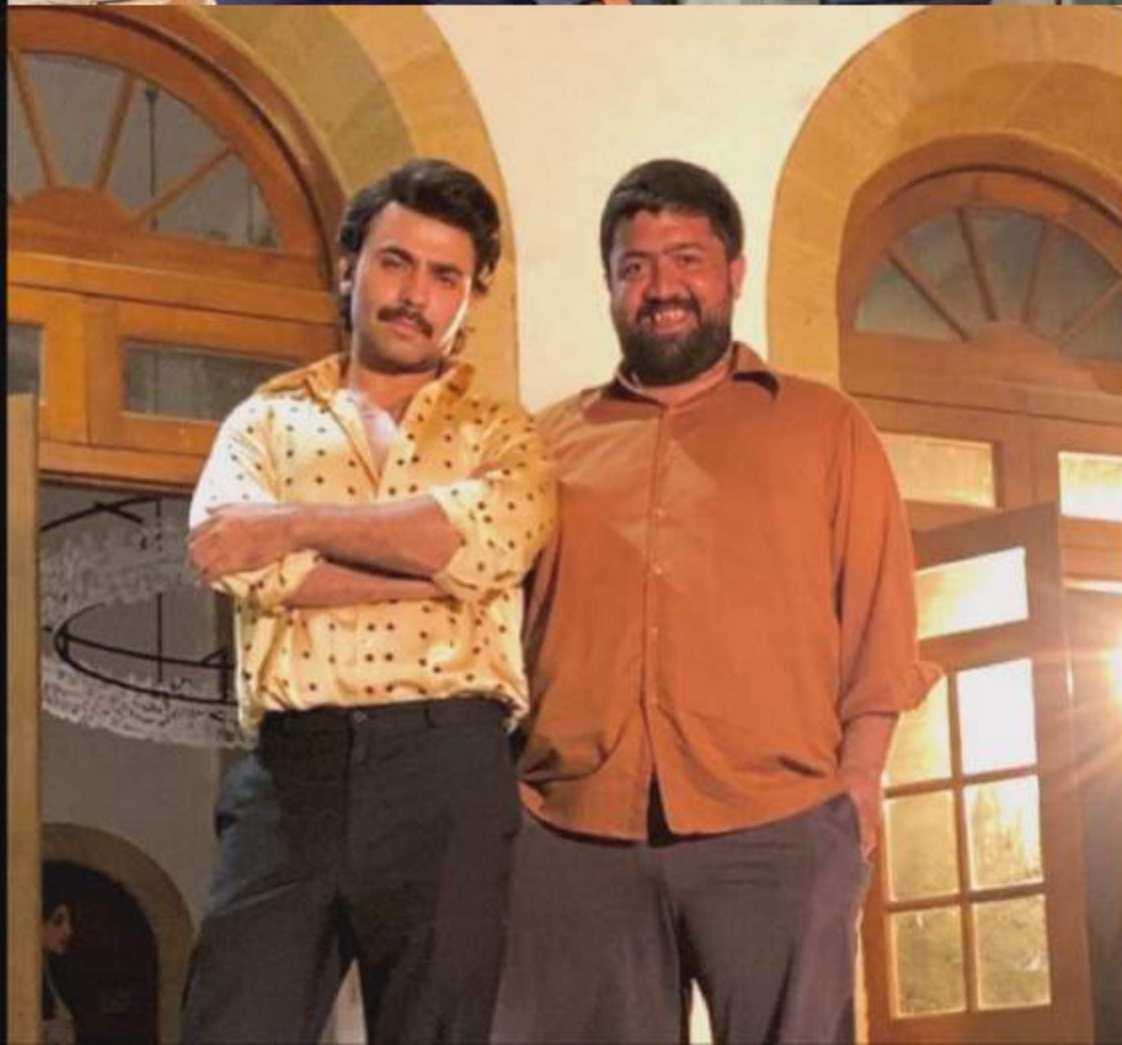
Fashion shoot for Diana London, handled complete production management from pre-production to execution.

Photographer: Ahsan Qureshi.
Location: Lahore.

- Managed model hiring and coordination.
- Arranged photography team, studio, and equipment.
- Supervised crew operations for the shoot.
- Organized logistics, scheduling, and on-set requirements.



ON SET WITH STARS



THANK YOU

FOR VIEWING MY PORTFOLIO

+92 312 3971149

www.asadjawaid.com

hello@asadjawaid.com